



The Farm Report

The Newsletter of the Clow Creek Farm Homeowners Association

From the Editor

August | 2023

Submitted by Brian Marsalli | Editor | CCF HOA

Greetings Clow Creek Farm Neighbors!

We hope your summer has been going well! August has arrived. September is not far behind. There's still plenty of time to enjoy that vacation and other outings before school begins.

Please make time for a couple of other events. First, you're invited to join us at a regular board meeting on August 22, 7:30 pm at the Tot Lot. The Tot Lot is off Dairyman's and directly behind the church. The meeting offers an opportunity for you to meet the board, provide your input and ask questions. Second, our subdivision party is scheduled for Saturday, September 9. It also will be held at the Tot Lot. Details to follow. We hope to see you at each event.

We continue to hit record highs in home sale prices. Please continue to focus on your property and don't simply rely on the upswing of our market. Our Declaration of Covenants, Restrictions, Easements, Charges, and Liens for Clow Creek Farm was created "to provide for a residential community of the highest quality and character for the benefit and convenience of the residents of Clow Creek." The entire HOA membership entered into an agreement to uphold the standards set forth in the Declaration when we purchased a home in Clow Creek. The elected Board is responsible for making sure we all keep our promise.

And now a plea for your help. As you know, the Board has four members. Clow Creek Farm will benefit from having additional voices on the board or committees. Ideally, the Board will have 5-7 members. You do not have to be a board member to serve on a committee. Please consider volunteering your time and talents. Approach us at the August meeting or contact us at ccfhoaboard@clowcreekfarm.com.

As always, here's hoping for a safe and successful school year and terrific Labor Day weekend!

INSIDE THIS ISSUE

- Summertime Grillin'2*
- Block Party3*
- Board Meeting Invite3*
- Welcome to Clow Creek...3*
- The Happy Gardener.....4*
- City News5*
- Secretary's Report6*
- Group Mailbox Buy6*
- Treasurer's Report.....6*
- Board Directory7*
- Pet Tales8*
- Codes & Covenants9*
- Then & Now.....9*
- Puzzler Page10*
- Mow Like a Pro.....11*

Sweet
Summer



Summertime Grillin'

GRILLED BABY BACK PORK RIBS

Fall apart tender and slathered with an incredible homemade barbecue sauce!

RUB FOR THE BABY BACK PORK RIBS
Rub both sides of the ribs (mostly on the meat side) Set aside for 2 hours or overnight.

- 2 1/2 tsp paprika powder
- 2 tsp garlic powder
- 1 1/2 tsp onion powder
- 1 tsp cayenne pepper
- 1 1/2 tsp dried thyme
- 1 1/2 tsp dried oregano
- 1 1/2 tsp salt
- 1/2 tsp black pepper

HOMEMADE BARBECUE SAUCE

Place all ingredients in a saucepan and simmer over medium heat, stirring occasionally, for 45 minutes or until thickened.

- 1/2 cup apple cider vinegar
- 1 1/2 cups tomato ketchup
- 1/2 cup water
- 1 1/2 tbs molasses

- 1/3 cup brown sugar
- 2 tsp dry mustard
- 1 1/2 tsp garlic powder
- 2 tsp Worcestershire sauce
- 1 tsp salt
- 1 tsp black pepper
- 1 tsp Tabasco or cayenne pepper

RIBS

5 lb. of pork ribs (2 racks) choose fatty ribs
3/4 cup sweet alcoholic apple cider (hard cider)
1 tbs olive oil
Preheat oven to 320°F. Place ribs on a tray in a single layer. Pour apple cider underneath the ribs, cover with foil then bake for 1 hour 30 minutes or until the meat is pretty tender. Remove from oven. To make on BBQ. Brush bony side of ribs with sauce, then cook on BBQ indirect heat on high (bony side up) with lid down for 5 minutes. Flip so meaty side is up, baste, cook with lid down for 5 minutes. Repeat 3 times until you have a nice caramelized glaze.



HOW TO GRILL CORN ON THE COB

- 4 whole corn on the cob
- 2 tbs melted butter, salted

SERVING:

- Softened butter, salted
- Finely chopped parsley



Preheat BBQ until very hot so you can get maximum charred bits in the fastest time possible for the juiciest corn Peel husk off the corn.

Place corn on the BBQ

Cook for 10 minutes, turning every couple of minutes, until there's little charred bits and the kernels are tender when pierced with a knife, but still JUICY! Key Tip – don't overcook the corn!

The trick to great grilled corn is to cook it long enough to get a char, but not so long that the kernels end up juiceless and dry.

In the last minute, brush with melted butter and roll around.

Serve corn with softened butter, sprinkled with parsley if

MESON SABIKA'S GARLIC POTATO SALAD

- 2 pounds of small red potatoes
- 2 tablespoons or 8 cloves of fresh garlic, peeled and finely chopped or crushed
- 2 cups of mayonnaise
- 1 teaspoon of ground white pepper
- 1 tablespoon of chopped fresh parsley
- Salt to taste

Boil potatoes, then peel and cut into four or six pieces each. Whip together with mayonnaise, garlic, salt, white pepper and parsley. Combine potatoes with the whipped mixture and chill. Garnish with fresh parsley.






CLOW CREEK FARM

Summer Party **BLOCK**

SATURDAY, SEPTEMBER 9
TOT LOT
3 TO 6 PM

Food for all and fun activities for the younger set. More details will follow on our Facebook page, website and, most likely, a flyer delivered to your mailbox.

Traditionally, we hold our block party near the end of the summer. The timing allows more families to attend by avoiding summer vacation conflicts. The party celebrates our community, the beginning of the new school year, welcomes new residents to our neighborhood and gives residents a chance to meet new neighbors and catch up with old friends.

Come Join Us!

The CCF HOA Board will hold a regular meeting at the Tot Lot on August 22 at 7:30 pm.

•

This is a great opportunity to meet the Board, learn about the latest activities and offer your input.

•

If you are new to Clow Creek, we'd love to meet you.

•

Please bring a chair or blanket for seating as benches are limited.

•

Bottled water will be available.

•

Meetings last approximately an hour, a little longer with resident participation.

WELCOME to the Farm!



ANTONIYA GANCHEVA & DESISLAVA TASEV
 2324 Haider Ave.

JONATHAN TRAQUENA & YURI ZERMENO
 4116 Schillinger Dr.



CCF HOA WELCOMES YOUR INVOLVEMENT

IF INTERESTED in planning and helping with social events, please reach out to social activities chairperson, Deanna Duncan at deanna.duncan29@gmail.com.

IF INTERESTED in joining the board or a committee, please tell a board member or contact the board at ccfhoaboard@clowcreekfarm.com.

IF YOU WOULD LIKE to submit a recipe or story for publication about someone or something in our neighborhood, please contact Brian at ccfhoabmarsalli@gmail.com.



You can create a beautiful cutting garden using these tips and some of our favorite plants so you can enjoy fresh blooms indoors all season.

Choosing A Site

Many of the most popular cutting flowers will prefer at least part sun, so it's best to choose a site that gets at least four to six hours of direct sunlight during the day. Knowing how much sun exposure the new planting bed will get can help you choose the right plant varieties for your cutting garden. If you're short on space, you can still incorporate flowers into existing beds that will be specifically for fresh cut arrangements.

Recipe for Great Soil

The soil in our area has significant amounts of compacted clay soils which do not allow the water to drain away properly or allow for enough air around the roots, so it's important to amend new planting beds to create ideal conditions for the right amount of water and air. Here's what you'll need for a new bed approximately 4 x 6 ft:

- 1 bag Growing Place Choice Garden Mix
- 1 bag Leaf Mulch
- 1 bag Blended Compost
- 1/4 bad Espoma Bio-tone Starter Plus

Creating a Design

When choosing plants, think about their bloom times. Incorporating early, mid and late blooming varieties in your cutting garden will provide a constant variety of blooms to enjoy indoors. Of course, you want the big showy flowers, but remember to incorporate some smaller blooms and foliage as they make great fillers to a fresh cut arrangement. Don't forget to leave a pathway in your design so you can easily access your plants when harvesting.

Roses

Roses are an obvious must-have for a cutting garden with an array of color choices and fragrant blooms. From miniatures to hybrid teas to shrub varieties, there are so many to choose from you could create a cutting garden with just roses.

Phlox

There is a phlox for almost any garden, but it's the summer phlox that is best for cutting gardens as they are usually taller, more upright and clump forming that look stunning in an arrangement. While most summer varieties prefer full sun, they will still perform well with light shade. Keep these plants well-irrigated during hot, humid spells. Overhead watering should be avoided and plants should be well spaced to allow for good air circulation.

Lilium & Hemerocallis

Lilium is a large group of summer blooming flowers that are great for cutting with a wide range of colors that grow from bulbs. Their narrow root system makes these a great choice to plant next to phlox or roses. These lilies are easy to grow and can grow in part shade to full sun. Some varieties can reach up to six feet tall and may require staking, while others stay small growing only a couple feet high. Hemerocallis or Daylilies are another great choice for a cutting garden as they are hardy, reliable and come in a variety of heights, colors and bloom times. With careful selection, you can have daylilies blooming from late May until early September.

Allium

This family of plants is very easy to care for and good looking throughout the season. These are great for a cutting garden as they make a great accent to an

arrangement in both fresh and dried form. These plants are rabbit repellent so they are great to plant in groups throughout your cutting garden to deter the rabbits from nibbling on your other plants.

Coreopsis

Coreopsis are a great choice for a cutting garden as many varieties have long bloom times lasting nearly all summer. Their yellow daisy like flowers are sure to brighten any arrangement. With several dwarf and compact varieties, these are a great choice to tuck into small spaces.

Echinacea

A cutting-garden favorite, these daisy-like flowers come in a rainbow of colors and the seed heads are excellent for dried flower arrangements too. These flowers prefer full sun, but can handle light shade and are drought tolerant.

Aster

Asters are a great choice for a cutting garden to keep blooms going into the fall. Taller varieties can be pinched back in July to maintain a shorter mounded form.

Fillers & Foliage

One of our favorite fillers for a cutting garden would have to be the Calamintha Montrose White because its sprays of pure white flowers bloom from mid summer to mid fall and stay in a neat mound without getting floppy. Baptisia is also a great choice for a cutting garden that offers sweet pea-like blooms in the spring, but once they're done blooming, their blue-green foliage and dark seed pods make a great accent to a floral arrangement.

City News You Can Use

Can You Dig It?

Planting, building, adding or fixing anything outdoors? Before digging, contact JULIE to have your underground utility lines marked. Its service is free. Call JULIE (Joint Utility Locating Information for Excavators) at 811 or go online at illinois1call.com/click-before-you-dig-using-e-request/. The service, available 24-7, may save you time, costly utility repairs and even your life. Member utility companies send their personnel to locate and mark underground utility lines on your property with colored paint and flags. More at illinois1call.com/.

Bikes Needed!

Cleaning out your garage? Hesus House of Aurora needs adult bikes for its families. These bikes serve as the primary means of transportation for employment. Children’s bikes are also welcome. The main frame should be in good structural condition. Volunteers will take care of the remaining repairs. The bike will be picked up at your home. Hesus House is the largest homeless shelter in Illinois outside of Chicago. To donate a bike and give hope, contact ccfhoabmarsalli@gmail.com.

Naperville Customer Care Center

Call 630-420-6187 to report power outages, roadway flooding,

damaged streetlights and signs, water main breaks and streets in need of repair. The NCCC is available 24/7. Find additional contacts at naperville.il.us/contact-us.

Last Fling

The 2023 Last Fling will take place Labor Day Weekend, Friday, September 1 through Monday, September 4. Save the date and join neighbors, family and friends with plans to enjoy the weekend’s live music, food, beverages and carnival fun along Jackson Avenue in downtown Naperville.

More information can be found on their website www.lastfling.org/



**Naperville is a Safe Community...
It's not a Crime-Free Community!**



Back-to-School Safety

As Naperville’s students head back to school, all residents play a vital role helping to keep kids safe! Assist in making Naperville “A Safer Naper” for our community’s children heading back to school by following these tips:

- Plan ahead and leave earlier than normal to allow enough time to reach your destination without rushing.
- Always come to a complete stop at stop signs and be sure to check carefully

for children on sidewalks and in crosswalks before proceeding.

- Be sure to obey crossing guards and school student safety patrols.
- Slow Down! Remember, school speed zones are reduced for a reason. When entering a school zone, slow down to 20 mph and be extra alert for children on foot and on bicycles.
- Be cautious when approaching school buses. It is illegal to proceed around a school bus with the stop arm engaged. Be patient as children enter and exit school buses.

Additional back-to-school safety tips for parents, students and motorists are available at naperville.il.us/asafernaper.

NAPERVILLE POLICE AND FIRE DEPARTMENTS' ANNUAL PUBLIC SAFETY OPEN HOUSE

Saturday, September 23 from 10 am to 2 pm
Naperville’s Public Safety Campus, 1380 Aurora Ave.

This family-friendly event will feature live demonstrations as well as food trucks, activities for all ages, and displays of police and fire vehicles and equipment. Visit with Sparky and McGruff and learn tips for preventing crime and fire that can help keep your family safe.

Secretary's Report

Phil Murray | Secretary | CCF HOA



JUNE 12, 2023 BOARD MEETING SUMMARY

Financial – Continue to evaluate capital projects to reduce the reserves to a more appropriate level. Landscaping is the largest expense to date - \$9,000. The utilities and the Easter Egg Hunt were the other expenses.

Outdoor Beautification – Received design proposals for Book Road, 103rd Street and the tot lot. Approached Pillar of Faith Church regarding with their landscaping. Offered one-time help using the resident volunteers who reached out to me. Working on the solution to complete the sidewalk from the Clow Creek Farm Addition.

Social Events – Working on assembling volunteers and plan for a block party to be held in late August or early September. Decided to hold August board meeting at the tot lot. The onsite meeting will hopefully encourage more to attend.

Miscellaneous – We have welcomed nine new families since the beginning of the year, four since the April meeting. Board will schedule a working meeting in July to discuss various business items to make sure we don't overlook those that were in progress during the board transition, as well as the new ones. One resident reached out to inquire about a board or committee role. Will connect after the resident gets back from vacation. Lastly, no homeowner guests attended the meeting.



Group Mailbox Buy

Are any of you residents interested in replacing your mailbox before winter?

If so, please reach out to ccfhoabmarsalli@gmail.com prior September 15. Although not the Board's role to set up group buys, we decided to take the initiative to gauge interest. Nothing is formalized. We anticipate using a local retailer for convenience and speed. Please let us know your preferred local retailer when contacting us.



Treasurer's Report

Matt Schuman | Treasurer CCF HOA

Annual Dues – For more information regarding Maintenance Assessments for Clow Creek Farm, please refer to Article IV, Sections 1,2,3,9 and 10 of the Clow Creek Farm Covenants and Restrictions. You can find this information on our website clowcreekfarm.com. Or please send an email to one of your Board Members requesting a copy.

Annual Budget – Landscaping maintenance (\$17,672) and our annual storage payment (\$1,236) are the largest expenses through the first half of the year. Anticipate increased expenses in the 3rd quarter of the calendar year for our annual insurance payment, as well as drawing from our reserves for renovation landscaping.

Douglas Automotive Repair Inc Quality, Honesty, Service First.

- Providing Quality Automotive Repair Service since 1997
- Family Owned & Operated
- Conveniently located in the Arrowhead Industrial Park: 2 mi west of Rt 59 off/95th St and Wolfs Crossing or 3/4 mi east of Eola Rd and Wolfs Crossing
- Full Service - European, Asian & Domestic
- Extended Warranty Work
- Factory Scheduled Maintenance
- Same Day Service on Most Vehicles
- Customer Shuttle Available In Local Area



630-904-6300

10138 Bode Rd, Unit A
Plainfield IL 60585

Mon-Fri 7:30 AM - 5:00 PM
Closed Weekends & Holidays

Visit our website to check out our current specials.

www.douglasautomotiverepair.com

**CCF HOA BOARD OF DIRECTORS
CONTACT INFORMATION**

President/Editor	Brian Marsalli	ccfhoabmarsalli@gmail.com
Secretary	Phil Murray	ccfhoapmurray@gmail.com
Treasurer	Matt Schuman	ccfhoamschuman@gmail.com
Director	Heidi Weiland	ccfhoahweiland@gmail.com

COMMITTEE CHAIRPERSONS/MEMBERS

Codes & Covenants Chair - Brian Marsalli

Members - Matt Schuman

Outdoor Beautification Chair - Brian Marsalli

Members - OPEN

Communications Chair - Brian Marsalli

Members - Phil Murray & Mike Davis

Social Committee Chair - Deanna Duncan

Members - OPEN - Please consider volunteering to help out with our social events.

CCF HOA Upcoming Events

August 15	Board Meeting	7:30 pm	Tot Lot
October 17	Board Meeting	7:00 pm	95th Street Library
November 7	ANNUAL MEETING	7:00 pm	95th Street Library

- Residents are welcome to attend the bi-monthly board meetings and will present their topic at 7:30 pm or later. Time, date, and location are subject to change.
- Stay tuned to future newsletters, our website and Facebook page for updated details about events. The committee heads and volunteers will coordinate the times, dates, and activities for hosting social events such as the Easter Egg Hunt, Garage Sale, National Night Out, and Block Party.

CCF HOA IS LOOKING FOR SOCIAL COMMITTEE VOLUNTEERS TO HELP CREATE AND PLAN EVENTS.

**INTERESTED IN PLACING AN AD IN
YOUR NEWSLETTER?**

**COMMERCIAL ADVERTISING
DEADLINE - 15TH
COST EFFECTIVE & NO CONTRACTS**

Contact Amy Scoville at 312-343-3413
or amy@allegraperville.com
allegraperville.com



**NEWSLETTER ARTICLES &
CLASSIFIED AD DEADLINE
15th of each month**

NEWSLETTER SUBMISSIONS
Any resident interested in adding content to the newsletter is welcome.

Residents looking to buy or sell, advertise an upcoming event, praise a resident for a kind act, or share a recipe, should send any information to our editor Brian Marsalli
ccfhoabmarsalli@gmail.com

"Publication of paid advertisements in the Association's newsletter is not an endorsement or recommendation of any advertised product or service. The Association and Allegra Marketing Print Mail are not responsible nor liable for the content of any advertisement published, here."

MOVING?

If you are selling your home, you will need a paid assessment letter and a 22.1 disclosure form. Please have your attorney email me with a request for this information as soon as a closing date is determined. Please reach out at ccfhoapmurray@gmail.com.

Editor's Note

Is there anything you would like to see added to the newsletter? Would you like to submit a recipe or story about someone or something in our neighborhood? Do you have a question regarding the newsletter? Do you want to edit and manage it? Contact Brian at ccfhoabmarsalli@gmail.com. Please note that information can change after the CCF HOA The Farm Report goes to press.



Pet Tales

By the Naperville Area Humane Society
1620 W. Diehl Road | Naperville | 630-420-8989

*Thank you for supporting
our homeless friends!*

BLACK CAT BALL 2023



Grab the hairspray and get ready to be "forever young" at this year's Black Cat Ball. This year's theme is the 80's and it's the purr-fect chance to whisker away the day and help our furry friends. So, grab your polo shirts and parachute pants, your shoulder pads, neon bows and banana clips and tease that mane, because we know you're going to "have the time of your life" as our dueling piano entertainers make sure it's a paw-ty we won't forget!



Friday, September 22, 2023

6 to 11 pm

Danada House - 3S501 Naperville Rd, Wheaton

TICKET PRICING

Early Bird Ticket Sales: \$150/person -OR- \$1,400/table of 10

Beginning Sept. 1: \$175/person -OR- \$1,650/table of 10

Sponsorships are available.

www.naperhumane.org

Adorable Adoptable Pets of the Month...



Bonnie | Female | 1.5 Years Old | 38 Pounds | Medium Breed Mix

Sweet, Affectionate, Playful, Smart | Medium-to-High Energy | People Friendly (kids ≥13 years old because of speed and strength) | Must Be Only Dog

Hi all, I'm Bonnie, a sweet and affectionate young gal with lovely white, tan, and black markings. I'm a friend to every human I meet and am always ready for fun and games! My friends at NAHS tell me I'm fast as the wind and think I might have the makings of an agility champ. I'm also very curious, and my nose is always working, especially on walks (so many great places to sniff). My ideal forever home is with an active person/family who enjoys being outdoors and is looking for a walking/hiking/running/frisbee tossing companion. Once we get our exercise, I'm ready to relax and chill with you indoors—or hop in the car to run errands. In other words, wherever you are, that's where I'll want to be! When it comes to other pooches, some I like, some I don't. So it probably would be best if I were the only dog in the home. And no cats, please. As you can see, my story is just beginning, but it's missing a major character—you! Please come to meet me at the shelter. I have a feeling we're meant to be together. Love and kisses, Bonnie!



FELIX | Male | Est. DOB 3/25/10 | Adoption fee: Waived thanks to Lucky 7

I'm a mature fellow who wants love and still has a lot of love to give. I am very affectionate and want to be petted, brushed, and get nose bops. I will flop over and roll around to hint for belly rubs. I squeak and chirp when I talk to you and share my thoughts on life. I am still playful, especially laser light, string and "crunchy" toys. If you're too busy to play, I'm also happy to just sit and look out the window at birds and chipmunks. When you come and meet me, bring treats - I LOVE treats! Can't wait to see you and hopefully go home with you.

Codes & Covenants

CODES & COVENANTS

The Codes and Covenants were put in place to protect the value of our properties. ***Whenever in doubt whether a project requires board approval, please reach out to the Board.*** The Board will quickly review the request and provide an answer. ***The Board provides an approval directly to you and not the contractor. Never assume the contractor has received approval from us before beginning your project.*** Both the Codes and Covenants and Rules and Regulations are available on our website at clowcreekfarm.com under the "Association Documentation" section.

PROPERTY MAINTENANCE

Did you know that maintaining your property in good condition is codified in our *Declaration of Covenants, Restrictions, Easements, Charges, and Liens for Clow Creek Farm*? Maintaining your property doesn't always involve a big ticket item. Replacing a mailbox, trimming overgrown branches, removing straggly or dead bushes, repairing torn screens and professionally painting the front door are small dollar outlays that bring noticeable results. Badly damaged siding, trim, gutters, fences and old roofs, as well as dead tree removal, are examples of larger ticket items that need prompt attention. Maintaining your property to the highest standards also helps your pocketbook by preventing both minor and major issues with structural damage.

TRASH & RECYCLING CONTAINERS; YARD WASTE BAGS

Please make sure trash and recycling receptacles are not stored outside, whether in front, on the side or behind your house. If more garage space is needed, consider switching to one of two smaller sizes offered by Naperville. More info at naperville.il.us/services/garbage-and-recycling/garbage-carts/. Also, the city requires residents to remove the empty trash and recycling receptacles from curbside by 7 pm on the same day of collection. Yard waste bags may be stored outside in a discreet place until pickup.



The Clow Creek Farm *Legacy*

As residents of Clow Creek Farm we live on a storied property in Wheatland Township. The Robert Clow family immigrated from Scotland and settled in Naperville in 1844. Robert paid \$1.25 an acre for what now includes Clow Creek Farm. His great-great grandson William F. Clow sold the property to MAF Developers, Inc. The development of our community began in the mid '90's. During the growth of our neighborhood, William F.'s wife Betty Jean continued to live on the undeveloped property which became Clow Creek Farm Addition. Betty Jean was a terrific neighbor for several years before moving. Betty Jean, who lived most of her adult life on the Clow-Land Dairy Farm, passed away in February of 2023 at 101. Clow Creek Farm was good for her as she was for it.

Let us honor the legacy of Betty Jean and William F. and the rest of the Clow family by respecting the history of the land, upholding its beauty and creating our own family memories.

THEN & NOW...



Homeowners, do you have CCF photos that you are willing to share?

Photos from earlier times can be especially fun for the newer residents to learn about CCF and for long term residents to reminisce. If so, please send them to me with information regarding the photos. Photos can be of the neighborhood in its earliest stages of development, the opening of Kendall, Crone and Neuqua, the first day of school in the early days and past events such as the CCF summer party.

Please send your info at your earliest convenience to ccfhoabmarsalli@gmail.com.

Puzzler Page

The King Falls

Across

- 1. Computer monitor, for short
- 4. Summer mo.
- 7. "Hold it right there!"
- 9. A lot of lot
- 10. High schooler
- 11. Peacock's pride
- 12. One who leads a Spartan lifestyle
- 14. White House nickname
- 15. Replace in the schedule
- 19. Gravitate (toward)
- 20. Beach item
- 22. Religious offshoot
- 23. South American monkey
- 24. Like some martinis
- 25. 1973 Supreme decision name

Down

- 1. 100 lbs.
- 2. Perlman of "Cheers"
- 3. Little piggies
- 4. Antioxidant berry
- 5. Type of acid linked to gout
- 6. Salon supply
- 8. Very old

1	2	3		4	5	6
7			8		9	
10				11		
	12		13			
		14				
	15	16			17	18
19				20		21
22				23		
24				25		

- 9. Try
- 13. Barely manage, with "out"
- 15. House of Lords member
- 16. Off-color
- 17. Twosome
- 18. One of the Jackson 5
- 19. "Acid"
- 21. Golfer's concern

E	O	R		Y	D	R	Y	D
I	T	I		T	S	E	C	S
L	P	A		N	L	E	A	N
	P	M		P	R	E	P	R
				E	K	I		
	C	T		E	S	A	S	A
L	T	A		N	T	E	N	T
E	A	C		A	H	O	A	W
A	U	G			C	R	T	C

The headline is a clue to the answer in the diagonal.

Archaeologists

J B S C H L I E M A N N O
 S T R U E V E R D B E L L
 W H E E L E R H E C D S I
 C K E I C H M A N N M X V
 P C R O E R I C H E J D E
 N O Y N E K V T O J R O R
 Y B H S X E H Y O S M O I
 E B M C R G C H E M A W N
 K U E R I G A K A Y L D S
 A L I R A N W D H J L I C
 E L B R S E A A Y M O A A
 L L R O F S W L K F W R R
 A O N E V A N S I Z A B T
 D G A R S T A N G M N A E
 H Q S S T E P H E N S L R
 O D N O I B W O O L L E Y

- ADAM
- KENYON
- ALBRIGHT
- LEAKEY
- BELL
- LEHNER
- BIONDO
- LUBBOCK
- BRAIDWOOD
- MALLOWAN
- CARTER
- MILANICH
- EICHMANN
- OLIVER
- EVANS
- ROERICH
- FEWKES
- SCHLIEMANN
- GARROD
- STEPHENS
- GARSTANG
- STRUEVER
- HAWASS
- VERRILL
- JOHANSON
- WHEELER
- WOOLLEY

SUNBATHER Wordoku

How to solve

WORDOKU puzzles

You only need logic and patience to solve a wordoku.

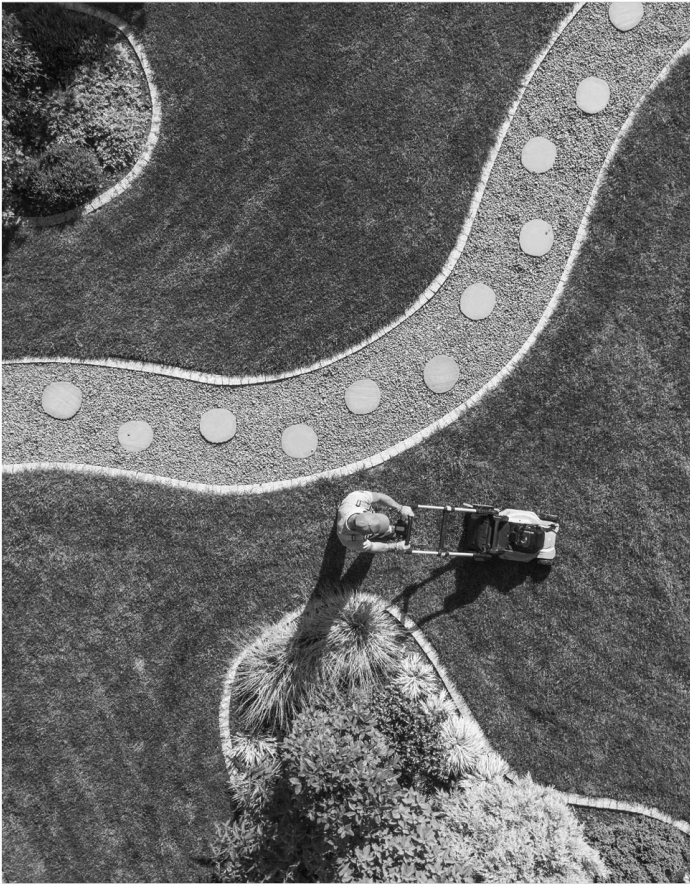
Simply make sure that each 3x3 square region has only one letter from the word SUNBATHER. Similarly, each letter can only appear once in a column or row

N	E	H	U	S	A	B	R	T
A	R	B	T	H	E	N	S	U
U	T	S	R	B	N	E	A	H
E	B	R	H	N	U	S	T	A
S	U	N	B	A	T	H	E	R
H	A	T	E	R	S	U	B	N
R	S	E	N	T	H	A	U	B
T	N	A	S	U	B	R	H	E
B	H	U	A	E	R	T	N	S

N								T
	R			H	E			
U			R			E		
E			H				T	A
			B		T			
H	A				S			N
		E			H			B
			S	U			H	
B								S

in the larger grid. The difficulty on this puzzle is easy.

Y	B	S	C	H	L	I	E	M	A	N	N	O
S	T	R	U	E	V	E	R	D	B	E	L	L
W	H	E	E	L	E	R	H	E	C	D	S	I
C	K	E	I	C	H	M	A	N	N	M	X	V
P	C	R	O	E	R	I	C	H	E	J	D	E
N	O	Y	N	E	K	V	T	O	J	R	O	R
Y	B	H	S	X	E	H	Y	O	S	M	O	I
E	B	M	C	R	G	C	H	E	M	A	W	N
K	U	E	R	I	G	A	K	A	Y	L	D	S
A	L	I	R	A	N	W	D	H	J	L	I	C
E	L	B	R	S	E	A	A	Y	M	O	A	A
L	L	R	O	F	S	W	L	K	F	W	R	R
A	O	N	E	V	A	N	S	I	Z	A	B	T
D	G	A	R	S	T	A	N	G	M	N	A	E
H	Q	S	S	T	E	P	H	E	N	S	L	R
O	D	N	O	I	B	W	O	O	L	L	E	Y



MOW LIKE A PRO

The dos and don'ts of cutting your grass.

Whether you enjoy it or try your best to avoid it, mowing your lawn is a necessary part of being a homeowner. The mowing process seems simple, but properly maintaining the space isn't as cut and dried as you may think. Here are a few dos and don'ts for mowing like a pro.

DO: Mow at the right time of day.

You should mow your lawn between 8:00 AM and 10:00 AM. This morning window is ideal because you won't disrupt your neighbors, run into dewy grass, or overwork yourself in the heat. As always, review your community's rules for approved mowing times before revving up the engine.

DON'T: Mow grass that's very wet or dry.

Check the weather forecast, and pick a cooler, rain-free day for optimal cutting conditions. Mowing during a heat wave or the hottest part of the day can burn or stress the grass. Likewise, cutting grass that's wet can clog your mower, damage the soil, and inhibit growth.

DO: Vary your mowing patterns.

Everyone has their preferred mowing style. Some people move their machine in a crisscross pattern, and others mow in waves or ripples. However, experts recommend alternating between a variety of patterns for the best care. Switching things up will lead to a more even cut and prevent patchy areas. It's also a great way to learn new techniques and try out different looks for your lawn.

DON'T: Cut your grass too short.

You want your grass to have an average blade height of about three inches. Aim to cut before your grass is four and a half inches tall, and when you do mow, never remove more than one-third of your leaf tissue. Mowing too short can weaken roots, slow down recovery, and encourage weed growth.

DO: Use your grass clippings.

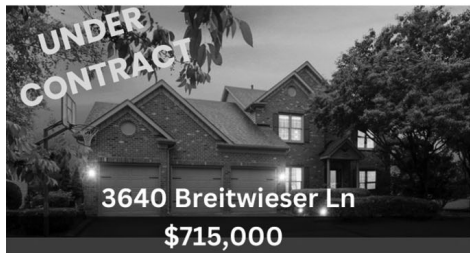
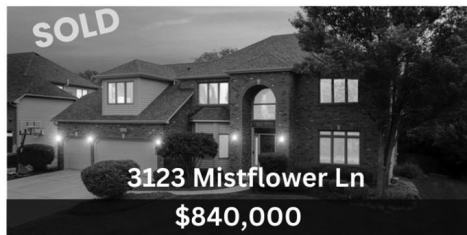
While your instinct may be to pitch your grass clippings, it's actually good to spread the excess around. This cut grass naturally replenishes the soil with water and nutrients when it decomposes, increasing moisture retention, decreasing soil temperature, and helping your grass grow back in a stronger, healthier fashion. Use clippings with mulch for an additional boost.

DON'T: Let your blade get dull.

Periodically inspect your mower, making sure the blades stay sharp, balanced, and clean. Instead of slicing, dull blades shred and tear the grass. This can cause discoloration, disease, and other damage that can disrupt all your hard work. A yearly sharpening can thwart these issues and provide neat cuts and a smooth mow.

Curious what the current market means to you!?

Let's Chat! 630.207.7001



Penny O'Brien
630.207.7001
penny.obrien
@bairdwarner.com



High Buyer Demand and Low inventory Makes it a Great Time to Sell!

\$250M Career Sales
102% List to Sales Price Ratio
325+ 5 Star Reviews



The market is shifting, is your broker shifting with it?

Terri Christian

Here is why you hire her:



I absolutely recommend Terri to anyone and everyone who is looking to buy or sell! We have now enlisted her services for both and she is just amazing! Most recently she helped us sell our house and not only did we receive top-dollar for it, which is what everyone hopes for, but we received such by and through a very solid offer which she taught us how to understand was the most solid and best offer! She is just so knowledgeable on the entire process from what catches a buyers eye to take a look at your house, to what the right sale price is based upon comparables in the area, to when and how to respond to each offer so as to place and keep you in the best negotiating position. Not to mention, her responses are more timely than you could ask for! And during the stress of buying and selling, that is worth its weight in gold! Trust me, Terri is who you want. Period.



Why reach out to Terri?

- She works with your local @properties Christie's International Real Estate brokerage right within your neighborhood and understand the local market.
- She has marketing strategies superior to the competition, top-notch negotiation skills, and so much more.
- She offers hands-on, personalized service, giving you the attention, you deserve.
- The market is shifting, and now more than ever you need a strong real estate company with cutting edge tools to represent you! We'd love to show you the @properties Christie's International Real Estate difference.
- The process begins sometimes months before listing a home or starting to search for a new home...the time to prepare is now!



Terri Christian
630.244.2281
terrichristian@atproperties.com



ALLEGRA

MARKETING • PRINT • MAIL

MARKETING
+

PRINT
+

MAIL
+

DESIGN
+

WEB
+

SIGNS



Capture Your Audience's Attention!
Brochures • Banners • Event Signs • Promo Items • And More!

For more information about all our services and advertising in the homeowner association newsletters, please contact:
Amy Scoville | Director of Business Development
amy@allegranaperville.com | 312-343-3413

allegranaperville.com • 630.963.9100

BUYING OR SELLING A HOME?



SOLD \$875K
1611 Vincent Ct.



SOLD \$1.325M
1319 Bonnema Ave.



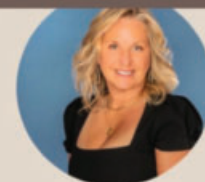
SOLD
12656 S Talbot Ct.



BAIRD & WARNER

Karen Sanders
630.709.9901

karen.sanders@bairdwarner.com

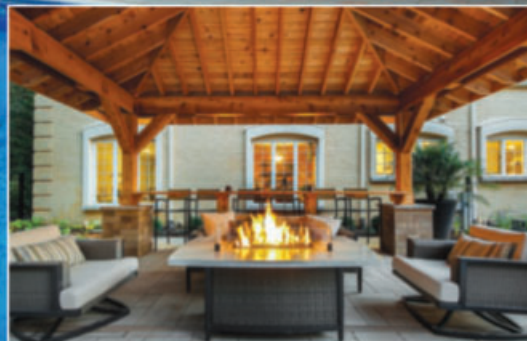


Transform Your Outdoor Space...

- Patios
- Natural Stone
- Retaining Walls
- Plantings
- Walks
- Lighting
- Outdoor Kitchens
- Ponds & Fountains
- Fireplaces & Fire Pits
- Pergolas & Pavilions
- Decks
- Lawn & Yard Maintenance

Live Life Beautifully!

P.A. **LIKES**, Inc.
www.likeslandscaping.com
630-904-TREE (8733)



AccuMax, Inc.

HEATING & COOLING



**FATHER AND SON
SINCE 1990.**

**WE TREAT YOU THE WAY WE
WANT TO BE TREATED...
HONEST, RELIABLE AND
STRAIGHT FORWARD.
A SMALL FAMILY-OWNED
LOCAL BUSINESS.**

“YOU WILL LOVE OUR PRICES!”

AccuMaxInc.com



HEATING • COOLING • SERVICE • SALES • INSTALLATIONS



FAST, PROFESSIONAL, SAME DAY SERVICE

NAPERVILLE 630-717-9773





Contact Amy Scoville at 312-343-3413 or
amy@allegranaperville.com
www.allegranaperville.com

Allegra Marketing • Print • Mail
 2200 Ogden Ave., Ste. 550, Lisle, IL 60532



PRSR STD
 U.S. POSTAGE
 PAID
 FOX VALLEY, IL
 PERMIT NO. 945



VICTORIA TAN
 TEAM

COMPASS



Whether you are looking to...
Buy - Sell - Invest - Rent
 ...we are your one complete source.

SOLD



4512 Pipestone Ct., Naperville - \$630,000

SOLD



4515 Pipestone Ct., Naperville - \$642,000

SOLD



4503 Pipestone Ct., Naperville - \$595,000



CONTACT US TODAY!
victoria@victorianteam.com
 630-618-6225



We can not wait to exceed your expectations!

Victorian Tan is a team of Real Estate agents affiliated with Compass - One Grant Square - Hinsdale, IL. Compass is a licensed Real Estate broker with a principal office in Chicago, IL and abides by all applicable Equal Housing Opportunity laws. All material presented herein is intended for informational purposes only, is compiled from sources deemed reliable but is subject to errors, omissions, and changes without notice. All measurements and square footages are approximate. This is not intended to solicit property already listed. Nothing herein shall be construed as legal, accounting or other professional advice outside the realm of Real Estate brokerage. Compass Concierge: Rules & exclusions apply. Compass offers no guarantee or warranty of results. Subject to additional terms and conditions.